

Industrial Ethernet Real-Time Device Servers For Applications Requiring Serial to Ethernet Connectivity

The SIXNET serial to Ethernet device servers are ideal for connecting your serial-based software applications over Ethernet to your remote serial devices. These high performance devices deliver a truly rugged solution in a very compact size. The DS device servers are easy to use and at the same time extremely flexible, offering the latest in advanced IP technology. Use the supplied Quick Configurator for fast setup or the powerful Device Manager for more advanced configurations.

SIXNET Device Server Benefits:

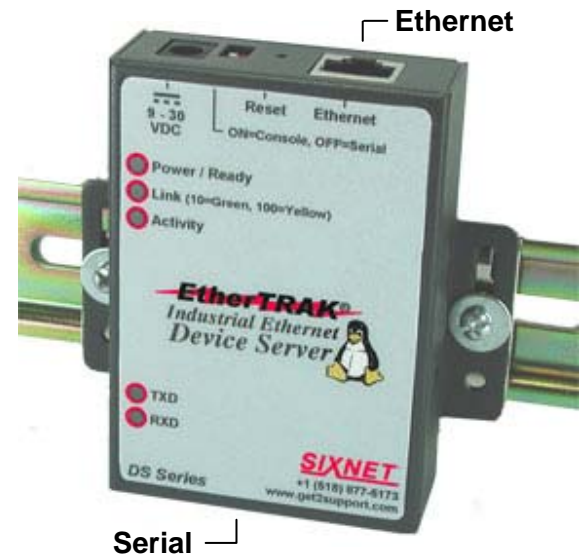
- Secure your data transfers!
- Make your job easier!
- Save you time and money!

Real-time Secure Performance:

- Auto-detecting 10/100 RJ45 Ethernet port
- Universal EIA-RS232/422/485 interface is software selectable which prevents field tampering
- Serial data tunneling across an IP network with full support for back to back (paired mode) operation
- Advanced security through AES / 3DES encryption over SSH or SSL sessions (SDS model)
- Next Generation IP support (IPV6) for investment protection and network compatibility
- Port buffering for data capture and analysis
- For console management applications, powerful authentication schemes prevent unauthorized access
- Device Manager software for centralized management and control
- COM or TTY port control and management for serial-based applications

Rugged and Reliable Hardware:

- Space saving compact package
- Rugged and protective metal enclosure
- Wide temperature range meets NEMA TS-2
- 15Kv ESD protection for continuous and reliable long-term operation
- Indicators for network and serial interfaces for easy troubleshooting
- Direct 9-30 VDC power range – No adapter needed in systems with 12 or 24 VDC available
- Power over serial cable eliminates cost of a separate power wiring – Supports both power from serial or power to serial device
- DIN Rail mounting standard for Industrial Automation applications
- Direct panel mountable for convenient installation on any flat surface



Linux
Inside



Advanced
Security



ISO9001
Quality



USA/Canada
Safety



European Emissions,
Immunity & Safty



Lead & Hazardous
Substance Free



Hazardous
Locations



USA/Canada
Emissions

Performance Specifications

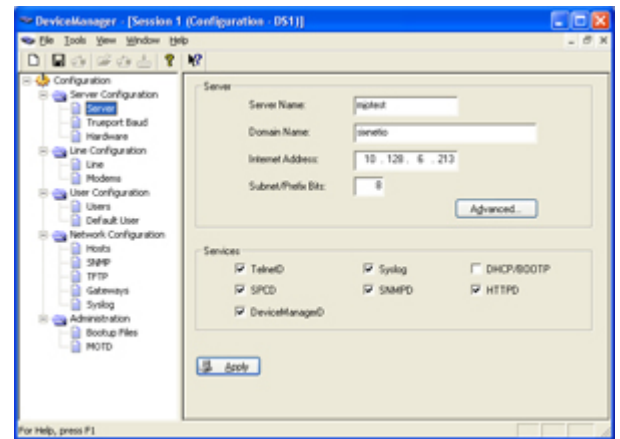
Serial Port	Universal
Modes	Serial or console (management)
EIA-RS232/422/485	Software selectable
Modem support	Full hardware flow control
EIA-RS232 speeds	50 bps to 230 Kbps
EIA-RS422/485 speeds	Up to 230 Kbps
Indicators	TX and RX LEDs
Interface modes	2 & 4 wire, half & full duplex
Ethernet Port	10 Mbps or 100 Mbps
10/100BaseTx	Auto-detecting speed & duplex
Isolation	1500 VRMS 1 minute
Protocols (all models):	IPv6, IPv4, TCP/IP, UDP, CIDR, Multicast, ARP, RARP, ICMP, BootP, DHCP, TFTP, Telnet, Raw, Reverse Telnet, RCP, HTTP
Additional protocols (SDS model):	SSH & Reverse, SSL, RIPv2/MD5, SNTP, LPD, DNS, WINS, HTTPS, SMTP, SNMPv3, PPP, PAP/CHAP, SLIP, CSLIP
Security & Authentication	SDS model only unless otherwise noted
Local database	Both SDS and DS models
Secure Shell	SSHv1 and SSHv2
Secure Socket Layer	SSL v2.0 and v3.0; server and client
Transport Layer Security	TLS v1.0
Encryption protocols:	AES, 3DES, DES, Blowfish, CAT128, ARCFour (RC4), ARCTWO (RC2)
Hashing algorithms:	MD5, SHA-1, RIPEMD160, SHA1-96, MD5-96
Key exchange	RSA, EDH-RSA, EDH-DSS, ADH
X.509 certificate verification	RSA, DSA
Authentication and accounting	RADIUS
SecureID-agent	RSA or via RADIUS
Other: Certificate authority (CA) list;	TACACS+, LDAP, NIS, Kerberos; IP address filtering; Disable unused daemons
Management	Powerful and Easy to Use
Web browser	HTTP or secure HTTPS (SSL/TSL)
Device Manager software	Microsoft Windows utility
Quick Configurator	For fast and easy setup
CLI (Command Line Interface)	Telnet, SSH, console port
Other: SNMP, MIB II; read & write;	SYSLOG; Port Buffering
TTY / COM emulation	TruePorts
OS support:	Microsoft Windows (Server 2003, XP, 2000 and NT), Linux, Solaris, AIX, SCO UnixWare/OpenServer, NCR, HP UX
Environmental	Rugged and Reliable
Input voltage	9-30 VDC thru power jack or RJ45
Input power (typical)	4.8 Watts
ESD protection on all signals	15Kv
Ethernet isolation	1500 VRMS 1 minute
Operating temperature range	-34* to +74 °C (meets NEMA TS-2)
Storage temperature range	-40 to +85 °C
Humidity (non-condensing)	5 to 95% RH
Vibration, shock, freefall	IEC68-2-6, -27, -32
Hazardous Locations	UL1604 (CSA C222/213) Class 1, Div 2 (Zone 2)
Electrical safety	
EMI emissions	
EMC immunity	
Mounting	DIN rail or direct to panel
Packaging (powder-coated steel)	IP30 protection
Dimensions (L x W x H)	See mechanical on next page
Weight	0.35 kg (0.8 lb)

Specifications are subject to change. Consult factory for latest information.

* Note: Real-time clock power back-up in SDS model is limited when unit is shut down at very low temperatures.



Compact Size with DIN Rail Mounting Standard



Powerful and Easy to Use Configuration Software

Ordering Guide

ET-DS-1

- 1 – One serial port
- DS** – Device Server
- SDS** – Secure Device Server
- ET** – EtherTRAK Family

Included with each server:

1. DIN rail mounting kit
2. Un-terminated power wire
3. CD with software utilities

Accessories:

RM-PS-024-01F	Power supply – Universal AC to 24 VDC, 1A
SP-ETH-2	Dual Ethernet port surge & lightning protector

SIXNET®

331 Ushers Road, P.O. Box 767 • Clifton Park, NY 12065 USA • +1 (518) 877-5173
 Fax +1 (518) 877-8346 • <mailto:sales@sixnetswitch.com> • <http://www.sixnetswitch.com>

A Complete Family of Automation Solutions

Ethernet and RS485 I/O

SIXNET can provide you the building blocks for the open systems you are looking for. Three complementary families of modular DIN rail mounted I/O provide local, remote, enterprise level, or Internet I/O solutions.

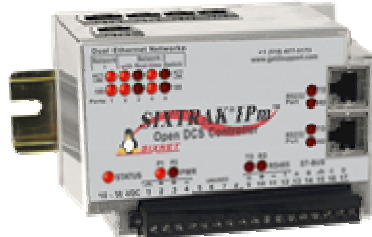
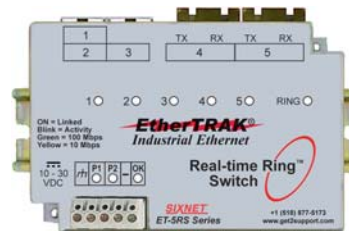


Industrial Telephone Modems

SIXNET rugged industrial modems eliminate the hassles of mounting a telephone modem in an industrial enclosure. These robust modems are rated for -30 to +70 °C industrial operation.

Industrial Ring and Managed Switches

SIXNET also offers industrial Ethernet Switches that support fault-tolerant rings, Rapid Spanning Tree Protocol for redundancy, SNMP for easy network management and much more. These switches are rugged, reliable, real-time and most of all, secure.



Controllers & RTUs with Open-Source Linux

SIXNET IPm is a combination of installation-ready industrial controllers & RTUs and a wealth of powerful software solutions. IPm offers the reliability of a PLC, the familiarity of powerful Windows programming and configuration utilities, all combined with powerful open-source Linux flexibility.



Request Your
FREE Product CD at
<http://www.sixnetswitch.com>

Contact your SIXNET Applications Engineer Today!

For the latest information, check out
<http://www.sixnetswitch.com>

SIXNET®

331 Ushers Road, P.O. Box 767 • Clifton Park, NY 12065 USA • +1 (518) 877-5173
Fax +1 (518) 877-8346 • <mailto:sales@sixnetswitch.com> • <http://www.sixnetswitch.com>