

### Select a RM-16DI2 when...

...you need the lowest cost per channel discrete inputs and channel-to-channel isolation is not required.

- High density inputs save space and reduce cost
- Module runs on existing I/O power supply (a special power source is not required)
- All inputs return to a common ground

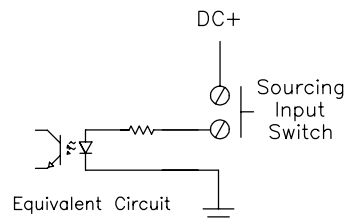
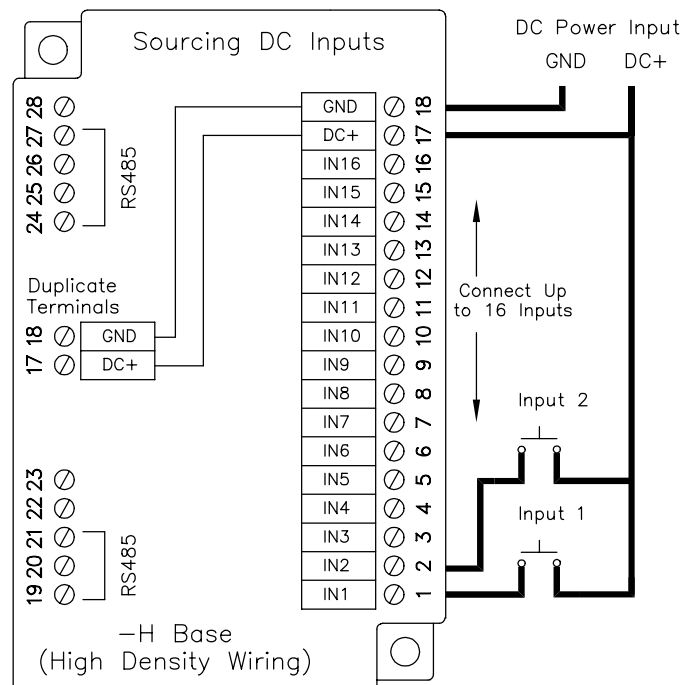


### Performance Specifications

Number of channels	16
Nominal input voltage	12/24 VDC
Guaranteed ON voltage (note 1)	9 VDC
Maximum input voltage	30 VDC
Guaranteed OFF current (note 2)	1.5 mA DC
Guaranteed OFF voltage (note 2)	5.0 VDC
Input resistance	3.7K Ohms
Input current @ 12 VDC	3.5 mA
Input current @ 24 VDC	7 mA
Filtered Mode ON/OFF delay (note 3)	50 mS

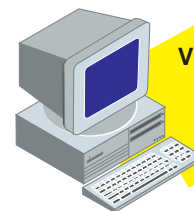
Serial communication information	See page 19
RS485 isolation	1200 Volts RMS 1 minute
Required supply voltage	10-30 VDC (0.5 watt typical)
Operating temperature range	-30 to 70° C
Storage temperature range	-40 to 85° C
Humidity (non-condensing)	5 to 95%

- Notes:**
1. Minimum voltage guaranteed to turn the module ON.
  2. The maximum input current/voltage that will not switch the input from OFF to ON.
  3. Smart logic ignores transients, power line dropouts and switch contact bounce.



### Ordering Information

Description	Part Number
Module with high density base	RM-16DI2-H
Replacement module only	RM-16DI2-M



Visit our web site for the latest details!