

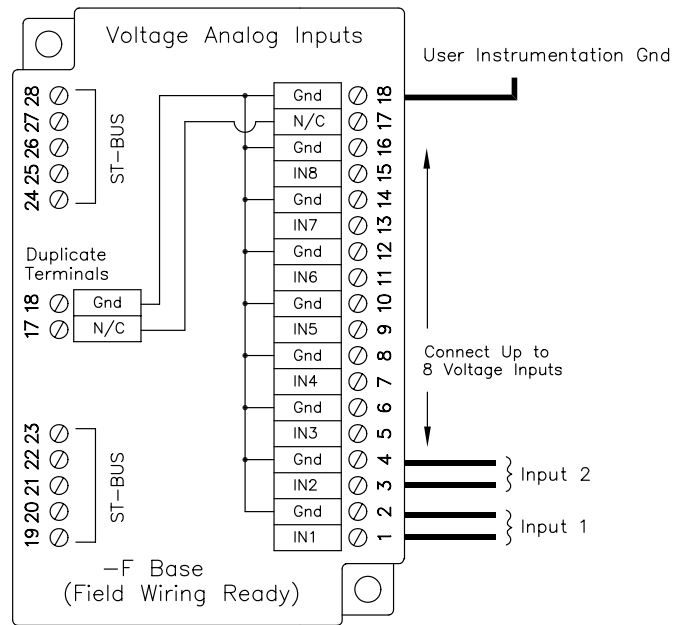
Select a voltage analog input module when...

...all the voltage input signals return to a common ground point.

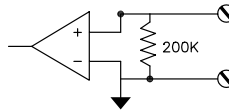
- Software selectable voltage ranges maximize input resolution
- Group isolation eliminates ground loops and interactions with other modules
- 50/60 Hz rejection eliminates errors from power line noise



Performance Specifications	
Number of channels	8
Input ranges: bipolar	+/- 1.0, 2.0, 5.0, 10.0 Volts
A/D resolution	12 bits
Input resolution	0.6 mV
Full scale accuracy (@ 20°C)	0.10%
Input span adjustability	+/- 25%
Input offset adjustability	+/- 25%
Span temperature coefficient	+/- 50 ppm per °C
Offset temperature coefficient	+/- 50 ppm per °C
Input impedance	200K Ohms
DMRR (differential rejection at 50/60 Hz)	66 db
Input protection	+/- 50 VDC
Fastest scan rate (all 8 channels)	5 mS
Maximum ST-Bus power	950 mW
Isolation (from ST-Bus)	1200 VDC
Operating temperature range	-30 to 70°C
Storage temperature range	-40 to 85°C
Humidity (non-condensing)	5 to 95%



Equivalent Circuit



Ordering Information

Description	Part Number
8 Voltage Inputs w/Wiring Base	ST-AI-10V-08F
Module only	ST-AI-10V-08M

