

Select these input modules when...

...modularity and the convenience of pre-wired field terminals will reduce your panel wiring.

- Optical isolation on each channel for best reliability
- Autopolarity for DC sinking or sourcing wiring
- Counting to 6000 pulses per minute



Performance Specifications

For each type:	-005	-024	-048	-120	-240	
Number of channels	8	8	8	8	8	
Nominal input voltage (AC or DC)	5	12/24	48	120	–	VAC/DC
(AC only)	–	–	–	(Note 3)	240	VAC
Guaranteed ON voltage (AC or DC)	4	10	32	60	140	VAC/DC
Maximum AC voltage	10	32	60	140	265	VAC
Maximum DC voltage	10	32	60	140	–	VDC
Guaranteed OFF current	1.0	1.0	1.0	1.0	1.0	mA DC
Guaranteed OFF voltage	1.5	3.5	6.0	25	50	VDC
Input resistance	510	2.2K	7.5K	18K	36K	Ohms
Nominal input current	7.5	5/10	6.5	6.5	6.5	mA
Fast DC mode ON/OFF delay	4	4	4	4	–	mS
Filtered mode On/OFF delay (Note 1)	25	25	25	50	50	mS
Maximum count frequency (Note 2)	100	100	100	100	10	Hz
Channel to channel isolation w/U base	500	500	500	500	500	Volts
Maximum ST-Bus power	250 mW		Notes: 1. Configurable smart logic filtering ignores transients, power line dropouts and switch contact bounce. 2. A count of OFF to ON transitions for each input is reported in a 16 bit register. 3. ST-DI-120-08F: specified for AC or DC sourcing wiring; not for grounded switch closures.			
Isolation (input to ST-Bus)	1200 V					
Operating temperature range	-30 to 70°C					
Storage temperature range	-40 to 85°C					
Humidity (non-condensing)	5 to 95%					

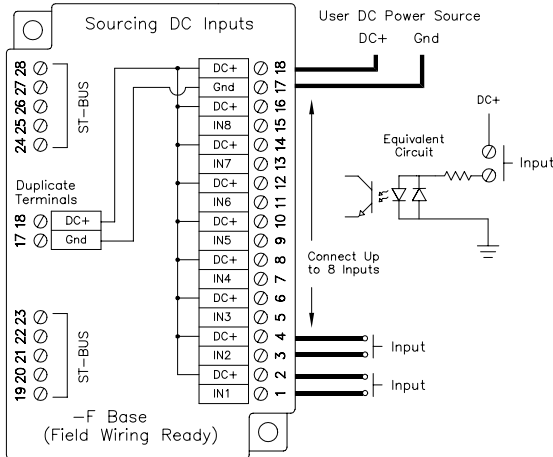
Ordering Information

Input Range	Field Wiring Base	Universal Wiring Base	Replacement Module
4-10 VDC	ST-DI-005-08F	ST-DI-005-08U	ST-DI-005-08M
10-32 VAC/DC	ST-DI-024-08F	ST-DI-024-08U	ST-DI-024-08M
32-60 VAC/DC	ST-DI-048-08F	ST-DI-048-08U	ST-DI-048-08M
60-140 VAC/DC	ST-DI-120-08F	ST-DI-120-08U	ST-DI-120-08M
140-265 VAC	ST-DI-240-08F	ST-DI-240-08U	ST-DI-240-08M

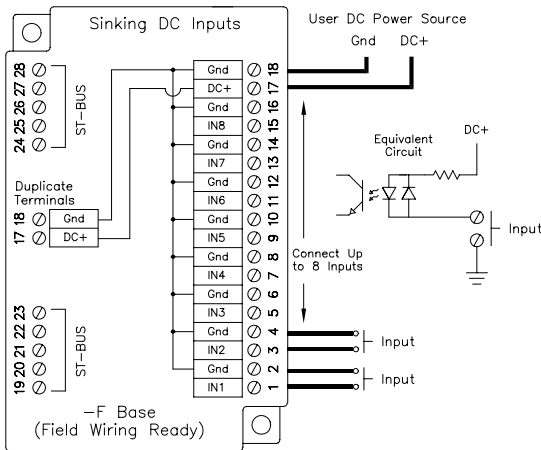
Select a Field Wiring Ready Base when...

...pre-wired field terminals will save you design, panel wiring and installation time.

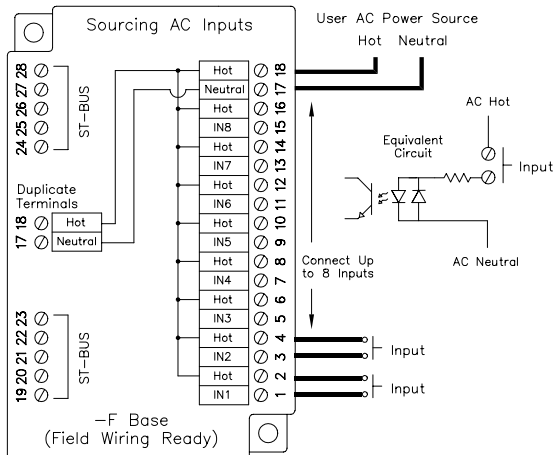
For most DC applications:



For special inputs from grounded switch closures:



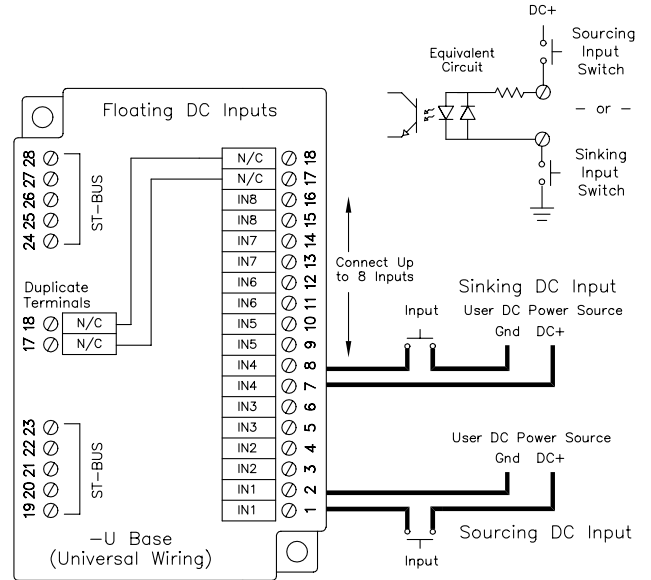
For AC applications with inputs on a single AC service:



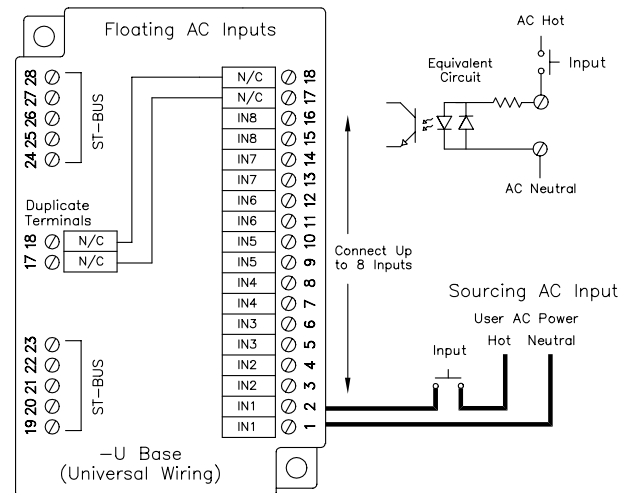
Select a Universal Base when...

...special requirements call for individually isolated input circuits with independent (floating) wiring.

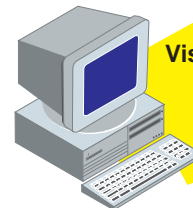
For special DC applications:



For special AC applications:



Note: In AC applications, each input may be wired to independent AC sources or line phases.



Visit our web site for the latest details!
www.sixnetio.com